

Utsunomiya-City, familiar with bicycle

experiences in many bicycle events

a lot of bicycle users in the central area of city

flat place - easy to use bicycles. up and down places - good for events

planning general traffic system (LRT / TDM)

Utsunomiya-Univ. with plenty of experience in bicycle research

projects connectable to "Cycle City"

Utsunomiya, a city in Tochigi Prefecture with 400,000-plus inhabitants, is located 100 km north of Tokyo. Utsunomiya is famous for its "Keirin" cycling competitions and for being the first Asian host of the "World Cycling Championship (Road Race)." Utsunomiya, the capital city of Tochigi, is thriving.

It has a new transportation system plan which combines the use of LRT (light rail transport) and rental-bicycles with an effective bicycle use for activity in the community and recreation.

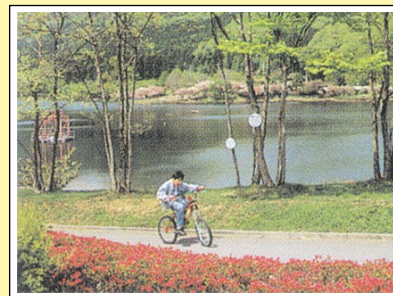
outline

population 440,000

area 312km²

symbolic tree ginkgo

symbolic flower azalea



From Utsunomiya-city

身近な自転車 1

From Ageo-city

bicycle, close to people



outline

population 210,000

area 46km²

symbolic tree oak

symbolic flower azalea



Community Cycle City 21

How are these plans started in each city ?



Ageo City, with 200,000 inhabitants, is 40 km north of Tokyo in Saitama Prefecture. It is famous as a pioneer of the automatic rental bicycle system as well as its Bridgestone Cycle Co., Ltd. plant.

The 50-member Ageo Citizen City Planning Council was founded with interest groups including residents' associations, volunteer groups, and other inhabitants busy creating a new general master plan for the city through discussions and workshops. They decided that the effective use of bicycles is one of the most important projects in the new plan.

one of the important suggestions by "Ageo-citizen City Planning Conference"

a pionner of a rental bicycle system at the station

flat place -a lot of bicycle users

planning general traffic system (LRT / TDM)

"Bridgestone Cycle co.,Ltd." / famous bicycle manufacturer is in Ageo

A Bicycle Race of the National Athletic Games is to be held in Ageo

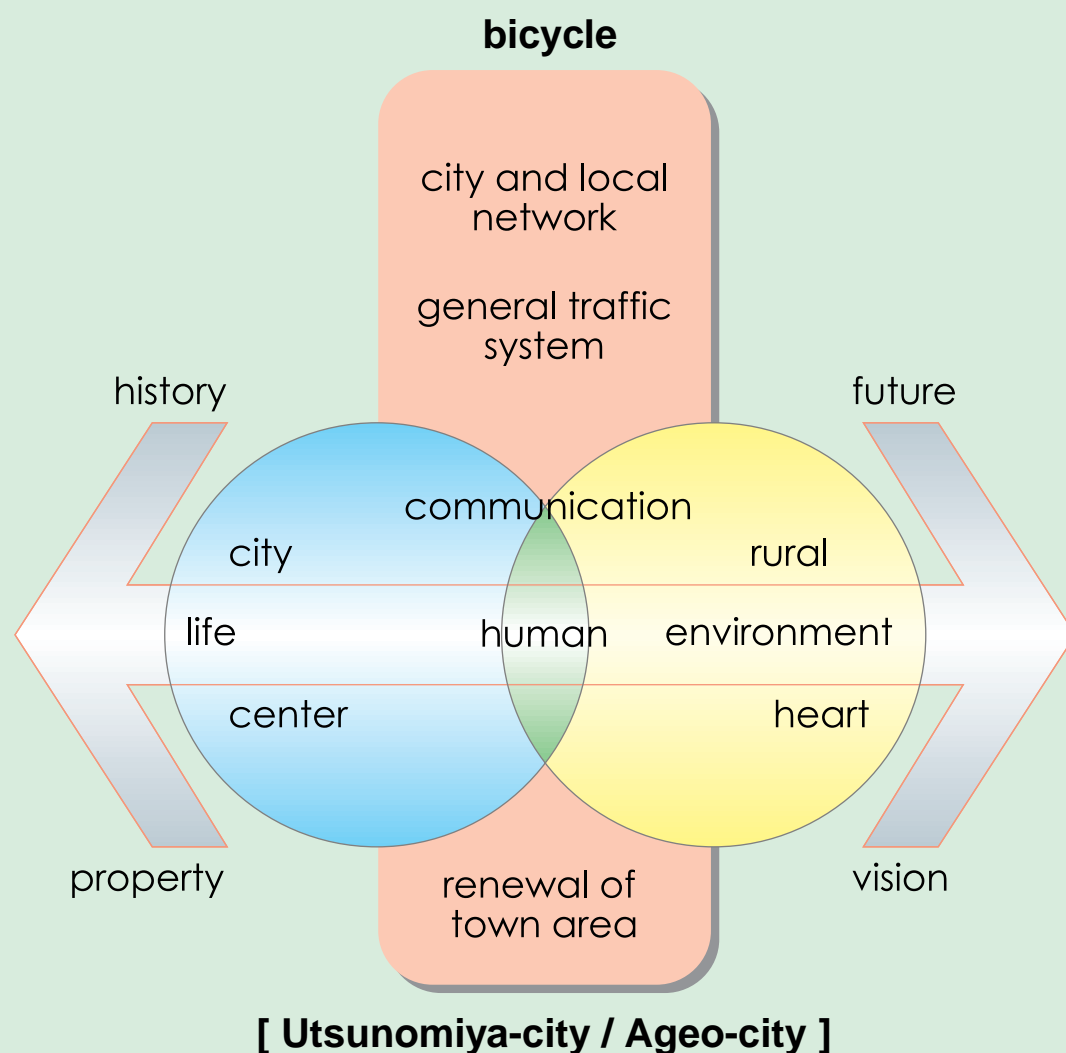
Ageo-City, familiar with bicycle

Bicycle traffic can contribute to making people feel more involved with their cities and can play a role in inner-city renewal to create a new communication among people.

Bicycles provide options that cars cannot; flexibility of speed, lightness, and physical fitness. Plus, they are non-polluting.

These characteristics make bicycles closer to people.

"Community Cycle City 21" is a city based on the concept of the aggressive use of bicycles to enhance humanity.



"Community Cycle City Plan 21" is a master plan to realize these concept, which each city is going to make.

What is "Community Cycle City 21" ?

Community Cycle City 21 自転車を活かす 2

Three major problems and clues for realization

effective use of bicycle



bicycle assisted by an electrified motor



city planning council by citizen



feeling danger from cars

1. Capability and Quality of Bicycles as Tools

- Improvement for comfortable use in rainy and/or windy weather, although bicycles have been improving rapidly more attractive (design, lighter weight).
- Improvement of bicycles for different speeds for shopping or commuting.
- Effective use of bicycles assisted by an electrified motor and folding bicycles.



folding bicycle

2. Bicycle Consciousness

- How to recognize that urban mobility can benefit from the reintroduction of bicycle-traffic as an attractive means of transportation about the city.
- Difficulty for most people to give up the idea of using cars, which they have come to accept as the norm, when the same things could be accomplished on bicycles.
- Some businesses cannot see the benefits to be gained from a cycle-friendly city.



white bike

3. Creation of Comfort Use

- How to construct an urban mobility system ("Chain mobility") including bicycle use and combining the attractions of city wandering.
- How to develop a bicycle road network, a street profile which will determine how different means of transportation can be used together.
- How it can technically be shifted to improve existing facilities.
- How we can promote the bicycle manufacturing industry and develop a new common-use system like "the white bike".



LRT (Strasbourg)



image of new type of traffic and central area of city

"traffic system" which is convenient, easy to use and advanced in ideas

"animated central area of city" with a new sense of value

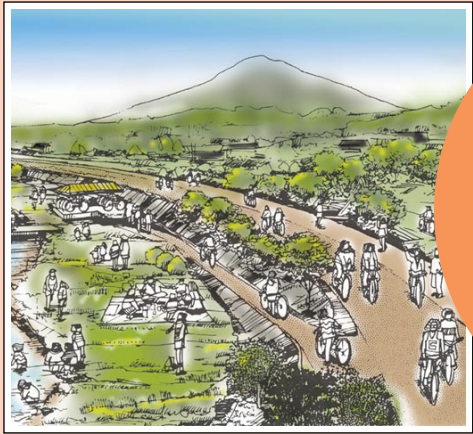


image of "network for good health" and recreation

"bicycle network and facilities" which is good for health and pleasure

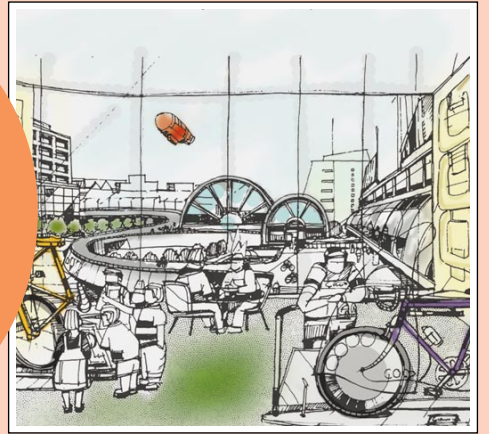


image of life in town with human relationships

town where "its old and new" are mixed and unified
"living environment" where inhabitants can live safely

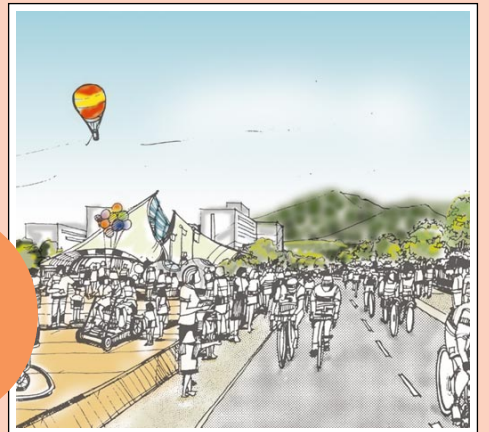


image of joyful cycling and festival

promote use of bicycle and develop friendship between users
"events" and "opportunity for local people to work together"

Expected effect and its image

Community Cycle City 21

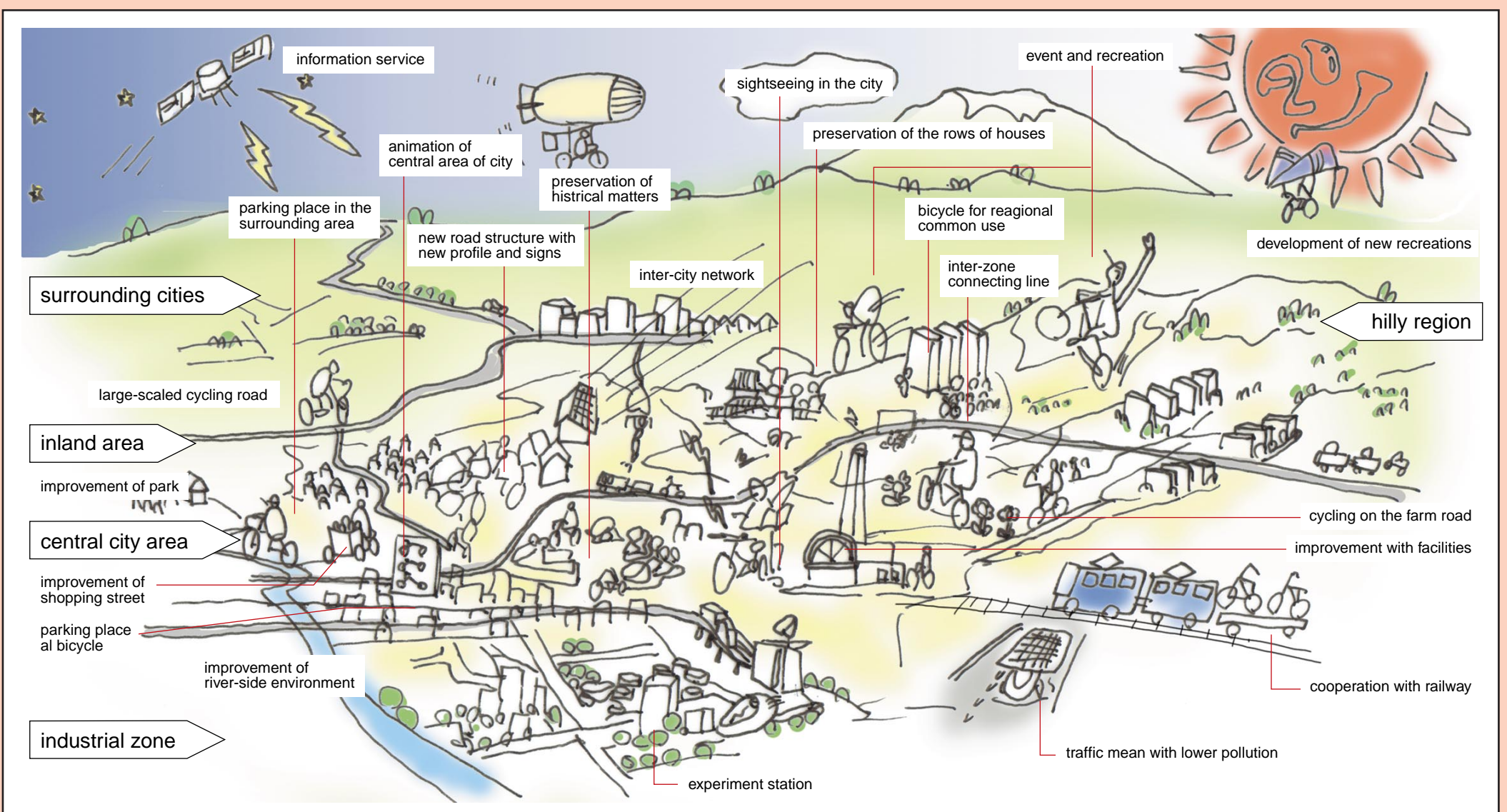
21世紀を先取る

3

Total image of "Community Cycle City 21"

take a long-sighted view of the 21st century

This is the image of "Community Cycle City 21",
where we create a new relation among people, city and life in the 21st century.
There bicycles will play a central role.



Please write your ideas, opinions and your impressions

about effective use of bicycle in our life and Community Cycle City 21 Plan
in the below space.(in Dutch, English or Japanese only)

Free discussion on board

Community Cycle City 21

英知を集める

4

gather everyone's wisdom



Title : "Community Cycle City 21 PLAN ", start from Utsunomiya - city & Ageo - city
Presenter : KOIKE, Hirotaka (Ph.D., Utsunomiya University) + SUTO, Atsushi (ECOSURF co.,ltd.)



(c)2000,SUTO A. (ECOSURF) All right reserved